

# down traun

## TOP 6



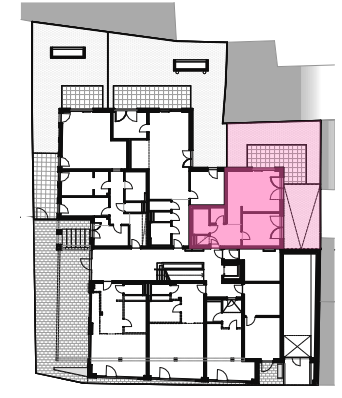
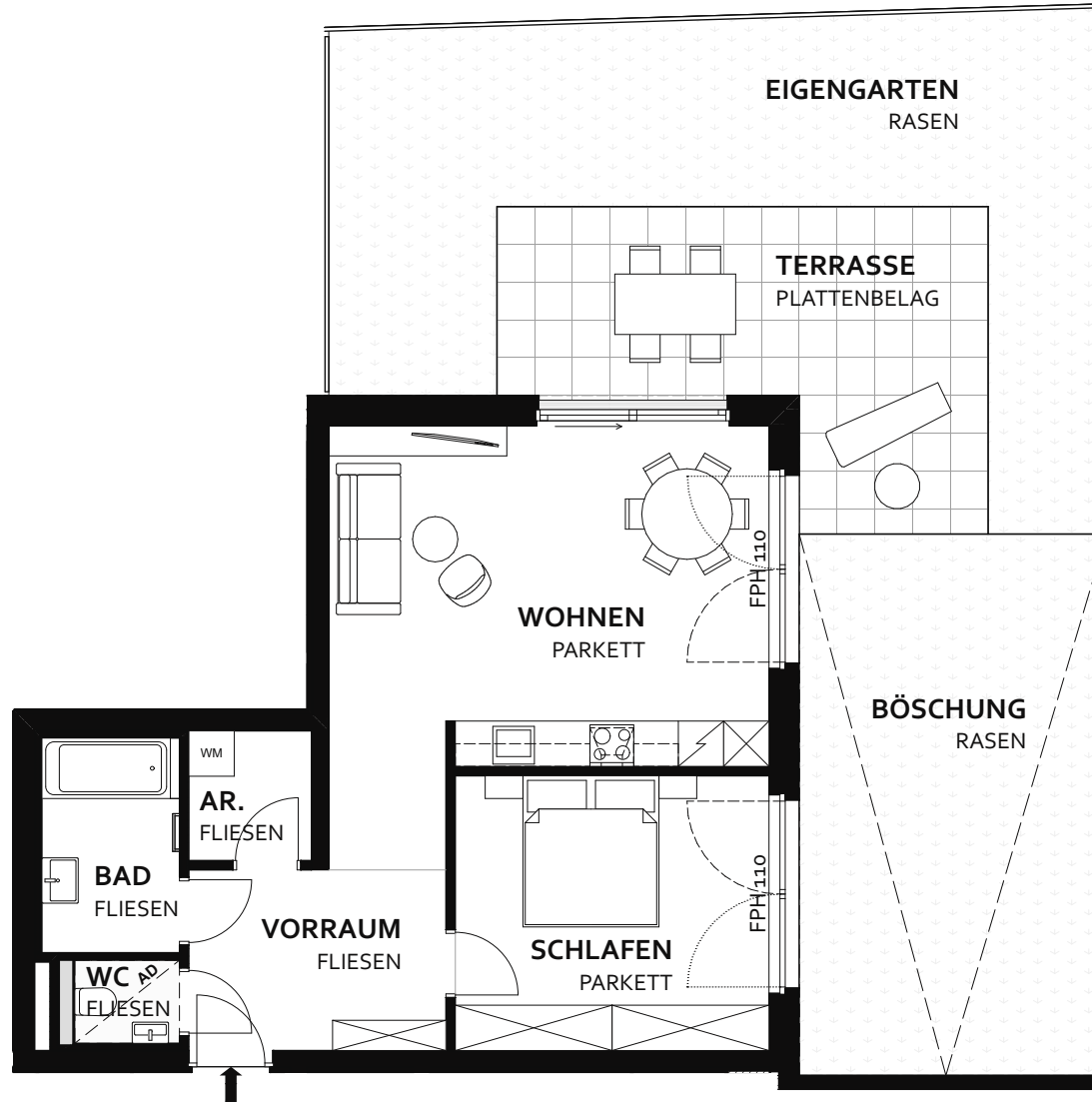
AR.	2,78 m <sup>2</sup>
BAD	5,16 m <sup>2</sup>
SCHLAFEN	15,09 m <sup>2</sup>
VORRAUM	8,13 m <sup>2</sup>
WC	1,52 m <sup>2</sup>
WOHNEN	28,32 m <sup>2</sup>

**GESAMT 61,00 m<sup>2</sup>**

KA 6	1,87 m <sup>2</sup>
TERRASSE	20,84 m <sup>2</sup>
EIGENGARTEN	38,54 m <sup>2</sup>
BÖSCHUNG	29,16 m <sup>2</sup>

## TOP 6 ERDGESCHOSS

Heinrich-Gruber-Str. 4  
4050 Traun



Heinrich-Gruber-Straße

AD Abgehängte Decke

