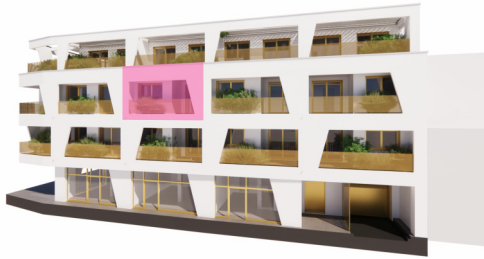


down
traun

TOP 17



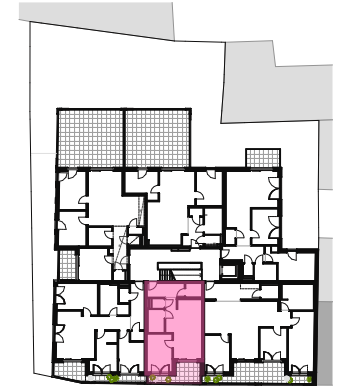
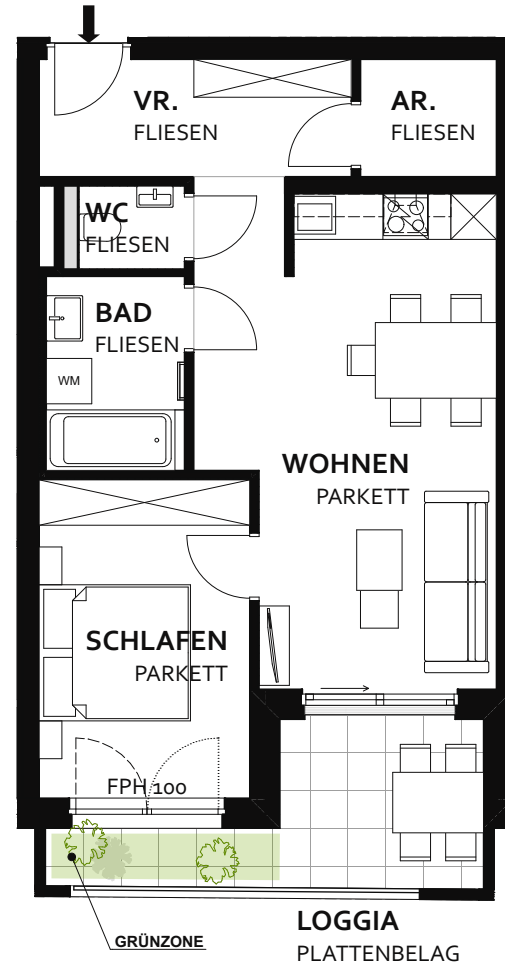
AR.	2,78 m ²
BAD	4,68 m ²
SCHLAFEN	11,71 m ²
VR.	6,39 m ²
WC	1,52 m ²
WOHNEN	23,83 m ²

GESAMT 50,91 m²

KA 17 1,81 m²

LOGGIA 8,42 m²

TOP 17
2.OBERGESCHOSS
Heinrich-Gruber-Str. 4
4050 Traun



Heinrich-Gruber-Straße

