

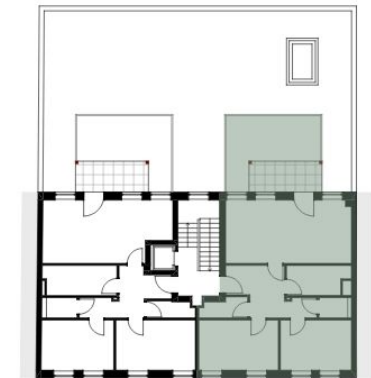
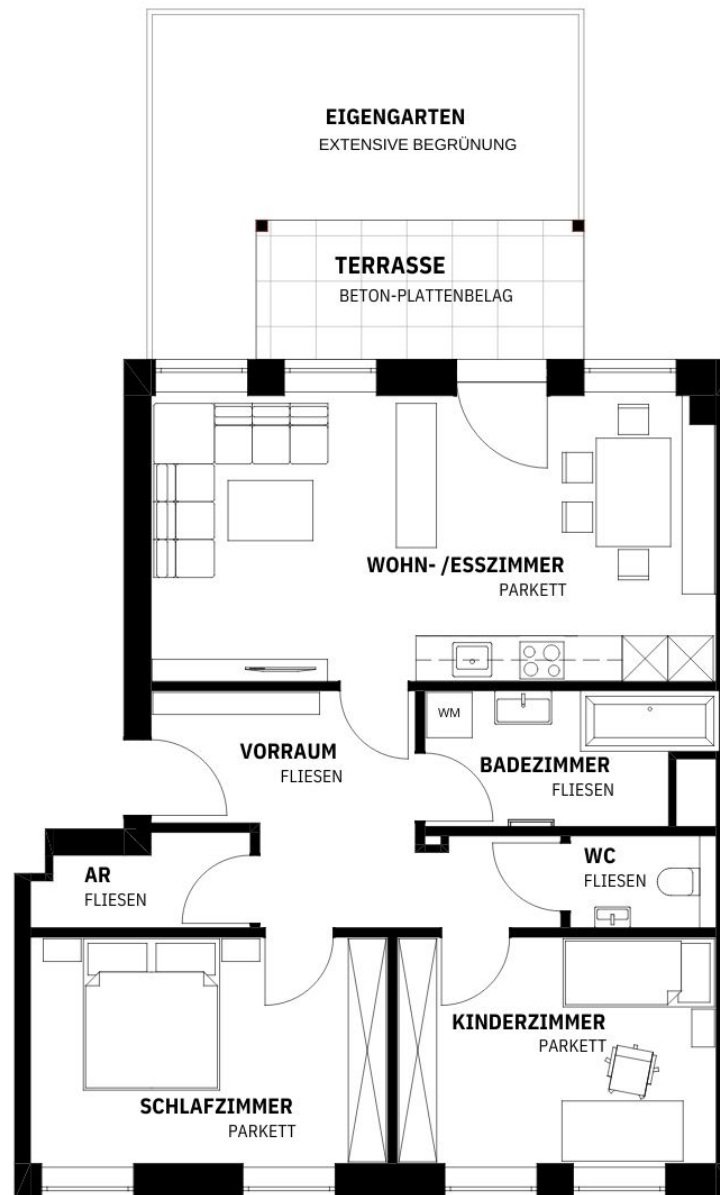
## TOP 2



VORRAUM	11,12 m <sup>2</sup>
WOHN- /ESSZIMMER	28,71 m <sup>2</sup>
BADEZIMMER	6,65 m <sup>2</sup>
WC	2,03 m <sup>2</sup>
KINDERZIMMER	13,04 m <sup>2</sup>
SCHLAFZIMMER	14,33 m <sup>2</sup>
AR	3,08 m <sup>2</sup>
<b>GESAMT</b>	<b>78,96 m<sup>2</sup></b>

TERRASSE	7,70 m <sup>2</sup>
EIGENGARTEN	17,30 m <sup>2</sup>
KELLERABTEIL AR 02	3,40 m <sup>2</sup>

## TOP 2 1.OBERGESCHOSS Hasnerstraße 11 4020 Linz



STRASSE

