

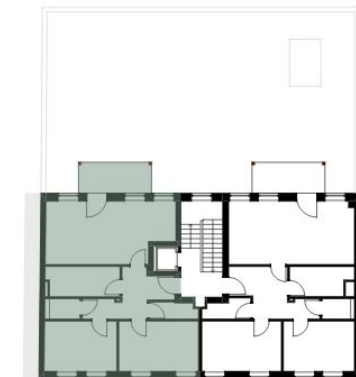
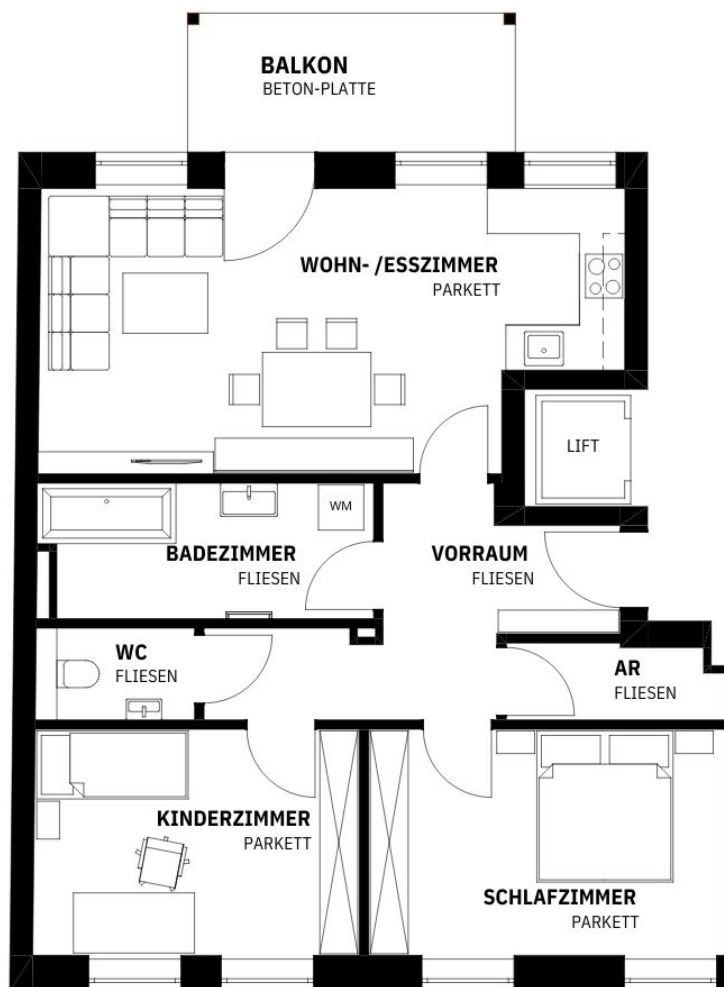
## TOP 3



VORRAUM	9,80 m <sup>2</sup>
WOHN- /ESSZIMMER	27,39 m <sup>2</sup>
BADEZIMMER	7,64 m <sup>2</sup>
WC	2,20 m <sup>2</sup>
KINDERZIMMER	13,16 m <sup>2</sup>
SCHLAFZIMMER	14,39 m <sup>2</sup>
AR	2,73 m <sup>2</sup>
<b>GESAMT</b>	<b>77,31 m<sup>2</sup></b>

KELLERABTEIL AR 03	3,40 m <sup>2</sup>
BALKON	7,70 m <sup>2</sup>

## TOP 3 2. OBERGESCHOSS Hasnerstraße 11 4020 Linz



STRASSE

